

POLARIS 2022 RZR TURBO-R REAR RECEIVER MOUNT

Thank you for choosing Rough Country for all your vehicle needs.

Please read instructions before beginning installation. Check the kit hardware against the kit contents shown below. Be sure you have all needed parts and know where they go.

If question exist, please call us @1-800-222-7023. We will be happy to answer any questions concerning this product.

Check all fasteners for proper torque. Check to ensure for adequate clearance between all components.

Periodically check all hardware for tightness.

Tools Required:

T40 Torx

21mm Wrench and Socket

10mm Wrench or Socket

4mm Allen Wrench

Kit Contents:

1 - Rear Receiver Mount

1 - 93154BAG1

2 - 6mm x 55mm Button Head Bolt

2 - 6mm Flat Washer

2 - 6mm Lock Nut



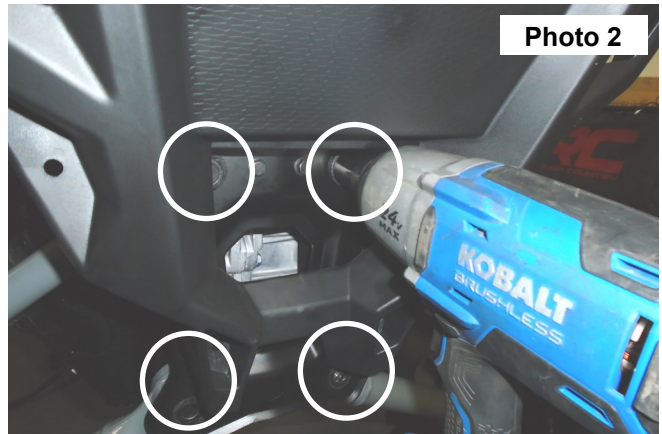
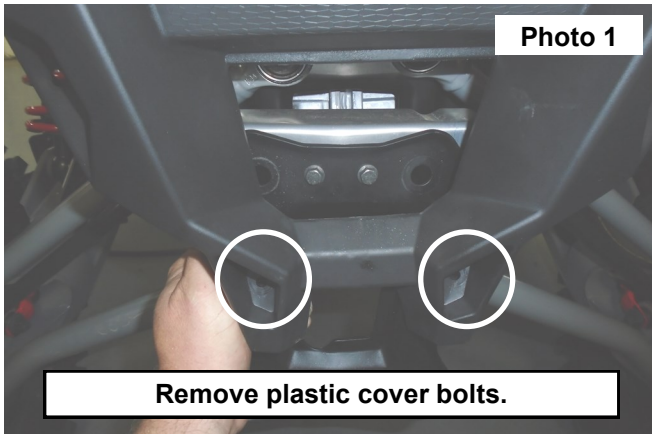
Torque Specs:

Size	Grade 5	Grade 8	Size	Class 8.8	Class 10.9
5/16"	15 ft/lbs	20ft/lbs	6MM	5ft/lbs	9ft/lbs
3/8"	30 ft/lbs	35ft/lbs	8MM	18ft/lbs	23ft/lbs
7/16"	45 ft/lbs	60ft/lbs	10MM	32ft/lbs	45ft/lbs
1/2"	65 ft/lbs	90ft/lbs	12MM	55ft/lbs	75ft/lbs
9/16"	95 ft/lbs	130ft/lbs	14MM	85ft/lbs	120ft/lbs
5/8"	135ft/lbs	175ft/lbs	16MM	130ft/lbs	165ft/lbs
3/4"	185ft/lbs	280ft/lbs	18MM	170ft/lbs	240ft/lbs

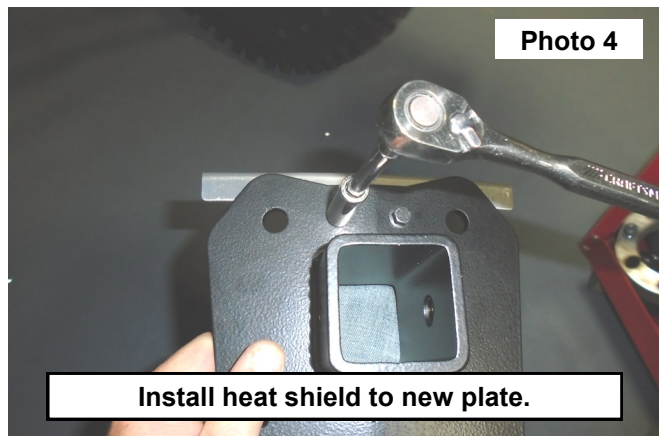
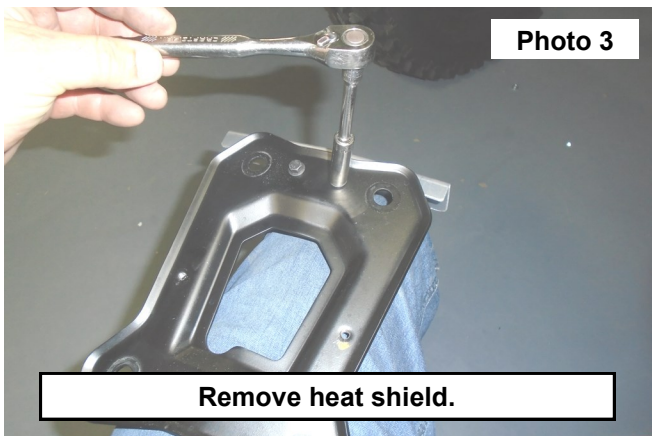


INSTALLATION INSTRUCTONS

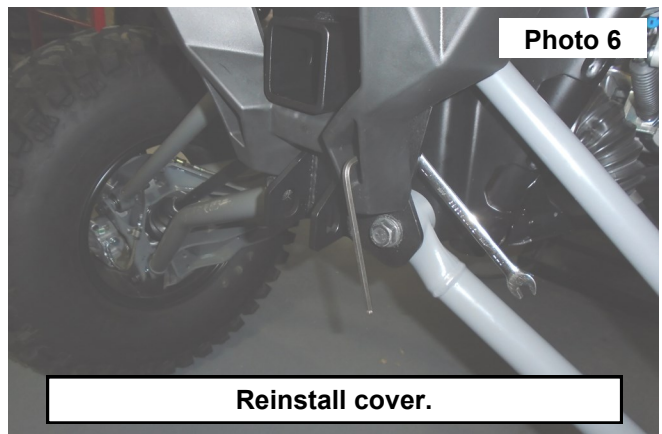
1. Remove the lowest two bolts on the plastic cover using a T40 Torx. Retain hardware for reuse. **See Photo 1.**
2. Use a 21mm wrench and socket to remove the four (4) bolts holding the stock suspension plate. **See Photo 2.**



3. Use a 10mm wrench to remove the heat shield from factory suspension plate. Retain hardware for reuse. **See Photo 3.**
4. Use the factory hardware to attach the factory heat shield to the new suspension plate with receiver mount. **See Photo 4.**



5. Install new suspension plate with receiver mount using the factory hardware minus the factory washers. Tighten with a 21mm wrench and socket. **See Photo 5.**
6. Use supplied 6mm hardware to reinstall the plastic cover. Tighten with a 10mm wrench and 4mm Allen wrench. **NOTE:** It may be necessary to trim plastic cover for proper fit. **See Photo 6.**





By purchasing any item sold by Rough Country, LLC, the buyer expressly warrants that he/she is in compliance with all applicable, State, and Local laws and regulations regarding the purchase, ownership, and use of the item. It shall be the buyers responsibility to comply with all Federal, State and Local laws governing the sales of any items listed, illustrated or sold. The buyer expressly agrees to indemnify and hold harmless Rough Country, LLC for all claims resulting directly or indirectly from the purchase, ownership, or use of the items.

